

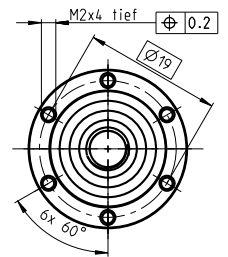
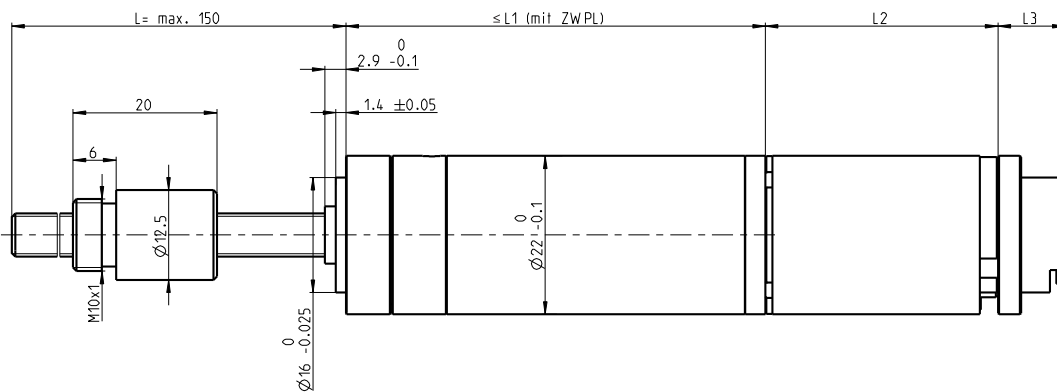
Modular spindle drives

NEW

In the shortest possible lead time.

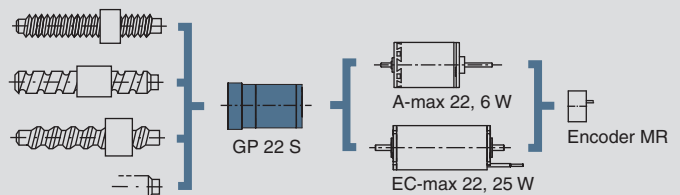


View without nut



GP 22 S Planetary Gearhead Ø22 mm

- With axial bearings for high axial loads
- High reliable radial load
- Customized spindle variations, even in a ceramic version on request
- High power density
- Compact design
- Large number of configurations
- Simple application
- Further nut and flange geometries on request
- Further spindle lengths and diameters on request



maxon motor

driven by precision

Configure your spindle drive according to your specific requirements.

Order by giving the part order number of spindle (incl. length), gearhead, motor, encoder and optional electronics.

Spindle	Type	Length L	Order number
Metric thread, steel ^{*1}	M6 x 1 mm	max. 150 mm	352907
Precision ball screw, steel ^{*2}	Ø6 x 2 mm	max. 150 mm	352301

Gearhead	
Spindle bearing	ball bearings
Radial play, 5 mm from flange	max. 0.05 mm
Max. perm. radial load, 15 mm from flange	150 N
Axial play	max. 0.02 mm
Sens of rotation, drive to output	=
Recommended input speed	< 6000 rpm
Recommended temperature range	-20°...+100°C

	1	2	2	3	3	4	4	4
Number of stages	1	2	2	3	3	4	4	4
Max. continuous torque (Nm)	0.5	0.5	0.5	0.8	0.8	1.0	1.0	1.0
Intermittently permissible torque (Nm)	0.8	0.8	0.8	1.2	1.2	1.6	1.6	1.6
Max. efficiency (%)	84	70	70	59	59	49	49	49
Gear length L1 (mm)	38.0	44.8	44.8	51.6	51.6	58.4	58.4	58.4

Order number	354413	341101	341106	341255	341260	341265	341270	341275
Reduction	1 : 1	14 : 1	29 : 1	53 : 1	89 : 1	198 : 1	333 : 1	479 : 1
Reduction absolute	¹ / ₁	²²⁵ / ₁₆	⁷²⁹ / ₂₅	³³⁷⁵ / ₆₄	⁴⁶¹⁷ / ₆₂	⁵⁰⁶²⁵ / ₂₅₆	⁶⁹²⁵⁵ / ₂₀₈	¹²⁴⁶⁵⁹ / ₂₆₀
Order number	341092	341102		341256	341261	341266	341271	341276
Reduction	3.8 : 1	16 : 1		62 : 1	104 : 1	231 : 1	370 : 1	561 : 1
Reduction absolute	¹⁵ / ₄	⁸⁸⁵ / ₅₂		¹²⁸²⁵ / ₂₀₈	⁸⁷⁷²³ / ₈₄₅	¹⁹²³⁷⁵ / ₈₃₂	¹⁰⁵⁵⁶⁰⁰¹ / ₂₈₅₆₁	²⁵²¹ / ₄₂₂₅
Order number	337896	341103		341257	341262	341267	341272	341277
Reduction	4.4 : 1	19 : 1		72 : 1	109 : 1	270 : 1	389 : 1	590 : 1
Reduction absolute	⁵⁷ / ₁₃	³²⁴⁹ / ₁₆₉		⁴⁸⁷³⁵ / ₆₇₆	²¹⁸⁷ / ₂₀	⁷³¹⁰²⁵ / ₂₇₀₄	²⁶³¹⁶⁹ / ₆₇₆	⁵⁹⁰⁴⁹ / ₁₀₀
Order number	341093	341104		341258	341263	341268	341273	341278
Reduction	5.4 : 1	20 : 1		76 : 1	128 : 1	285 : 1	410 : 1	690 : 1
Reduction absolute	²⁷ / ₅	⁸¹ / ₄		¹²¹⁵ / ₁₆	⁴¹⁵⁵³ / ₃₂₅	¹⁸²²⁵ / ₆₄	⁶⁵⁶¹ / ₁₆	¹¹²¹⁹³¹ / ₁₆₂₅
Order number		341105		341259	341264	341269	341274	341279
Reduction		24 : 1		84 : 1	157 : 1	316 : 1	455 : 1	850 : 1
Reduction absolute		¹⁵³⁹ / ₆₅		¹⁸⁵¹⁹³ / ₂₁₉₇	¹⁹⁶⁸³ / ₁₂₅	²⁷⁷⁷⁸⁹⁵ / ₈₇₈₈	⁵⁰⁰⁰²¹¹ / ₁₀₉₈₅	⁵³¹⁴⁴¹ / ₆₂₅

Motor	Encoder	Length L2 (Motor)	Length L3 (Encoder)	Order number
A-max 22, 6 W	-	≤ 31.9 mm	-	110151
EC-max 22, 25 W	MR 201940	≤ 48.5 mm	9.7 mm	283858

Electronics		Order number
EPOS 24/5	Positioning control unit	275512
EPOS P 24/5	Programmable positioning unit	323232

^{*1} Maximum permissible axial load: static 1000 N / dynamic 500 N

^{*2} Maximum permissible axial load: static 550 N / dynamic 500 N
(Indication of the dynamic load on 10 000 000 rotations at max. 4500 min⁻¹)

maxon motor ag

Brünigstrasse 220
CH-6072 Sachseln/OW
Tel. +41 (41) 666 15 00
Fax: +41 (41) 666 16 50
info@maxonmotor.com
www.maxonmotor.com

January 2008 / subject to change